



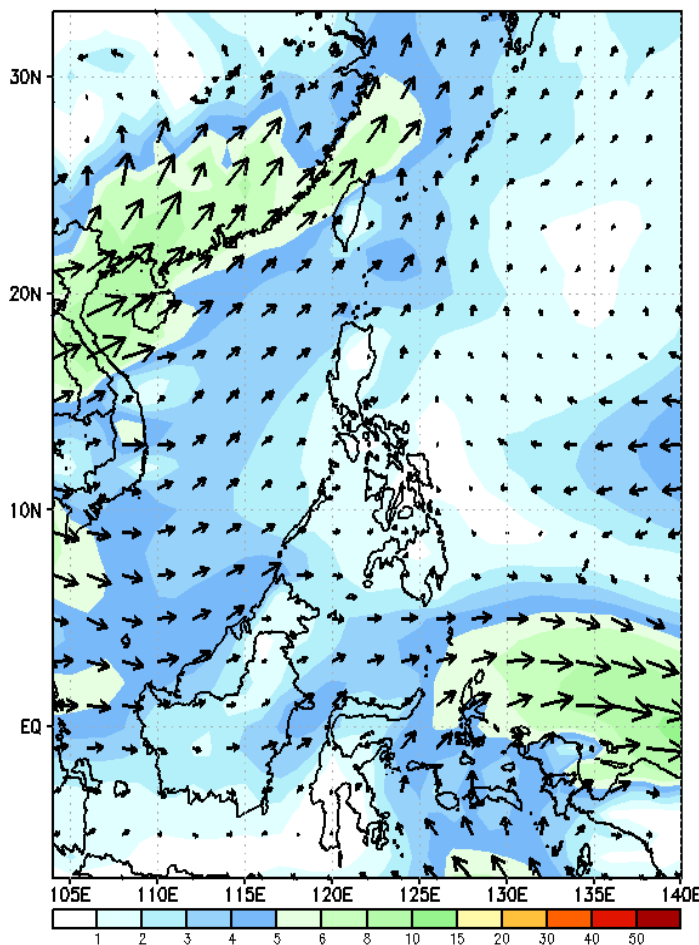
Week 1 & Week 2 Forecast for the Philippines using GEFS Model



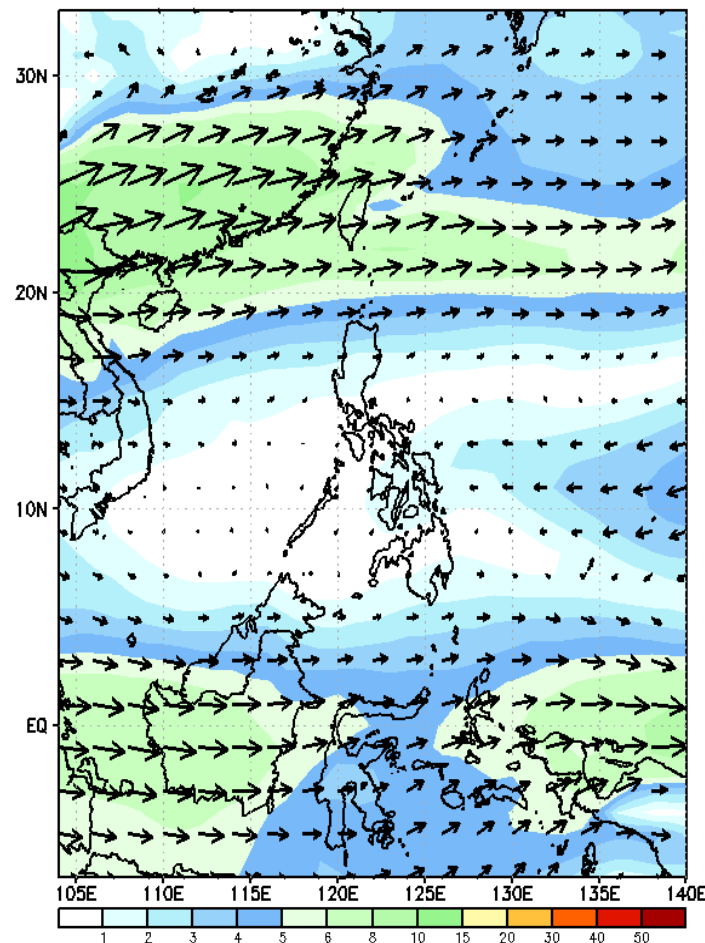
GEFS Week-1 Forecasts: Wind Forecast

Week 1: May 15-21, 2023

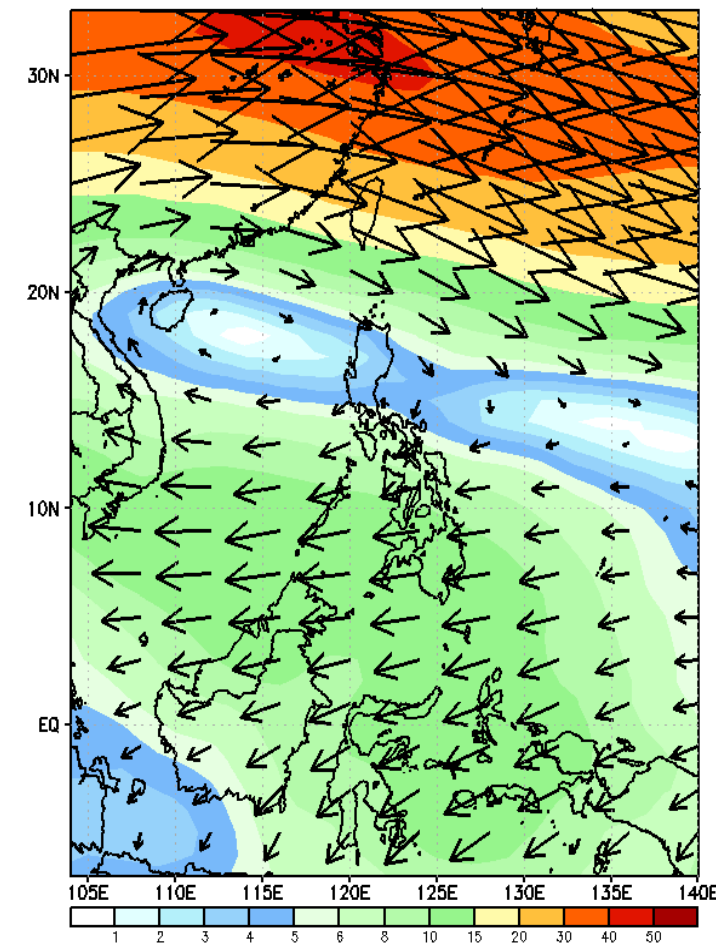
GEFS Week-1 850-hPa Wind Total
Valid: 20230515 - 20230521



GEFS Week-1 700-hPa Wind Total
Valid: 20230515 - 20230521



GEFS Week-1 200-hPa Wind Total
Valid: 20230515 - 20230521



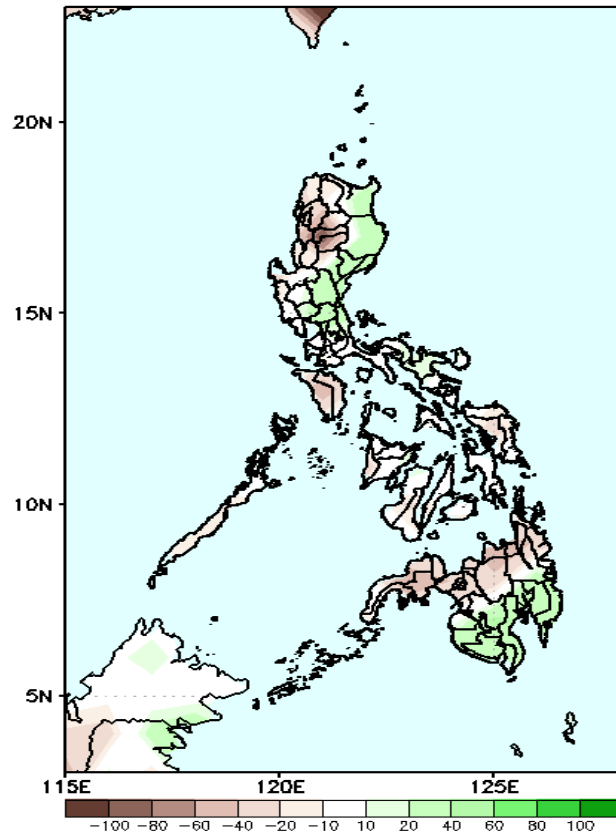
Westerly to southwesterly wind flow is forecasted to prevail over the western sections of the country. Easterlies is forecasted to some areas in the eastern section Luzon and Visayas during the forecast period.

Precipitation Anomaly and Exceedance Probability > 25/50 mm



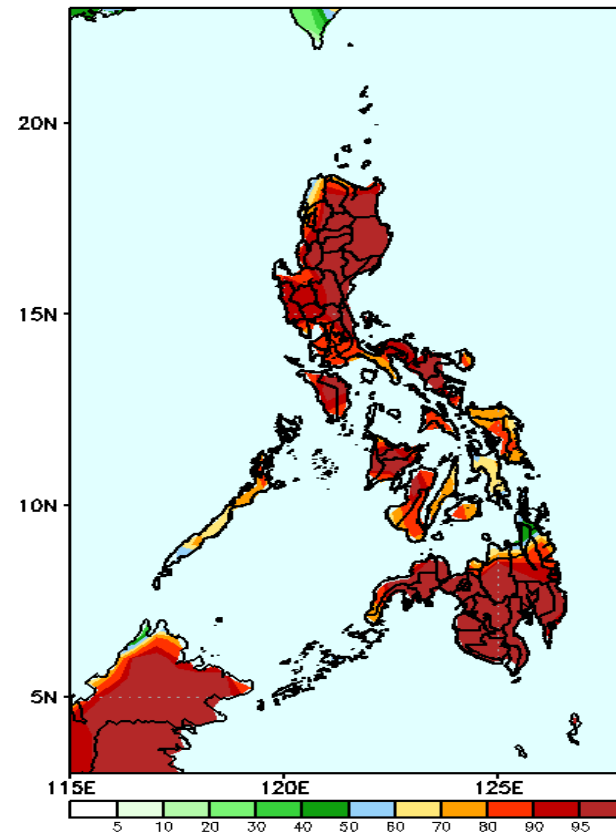
Week 1: May 15-21, 2023

GEFS Week-1 Precip Anomaly
Valid: 20230515 - 20230521



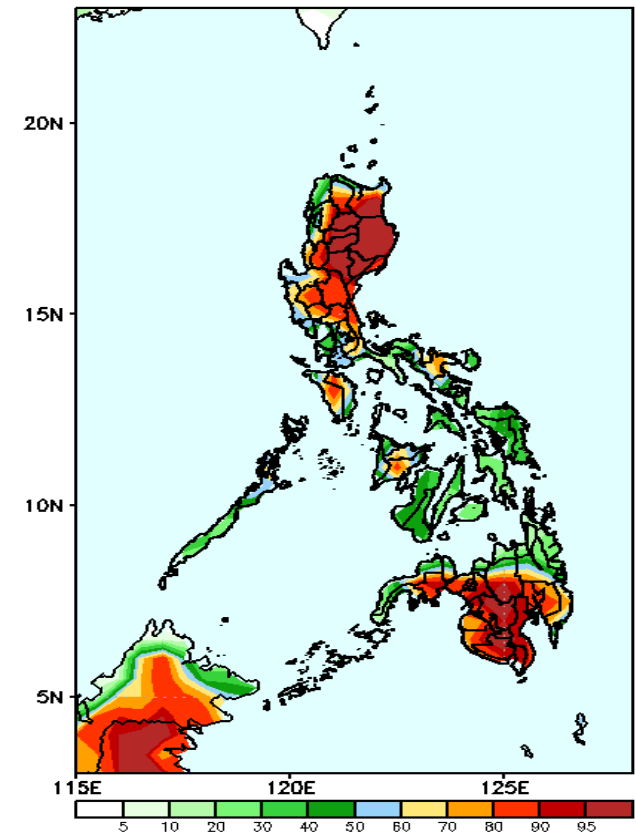
Rainfall deficit of 40-80mm is expected in most parts of western Luzon, Visayas and northern Mindanao while 40-80mm increase of rainfall is more likely in eastern Luzon and southern Mindanao during the forecast period.

GEFS Week-1 Exceedance Prob. > 25mm
Valid: 20230515 - 20230521



High to a very high probability to exceed 25mm of rainfall over most parts of the country during the forecast period.

GEFS Week-1 Exceedance Prob. > 50mm
Valid: 20230515 - 20230521



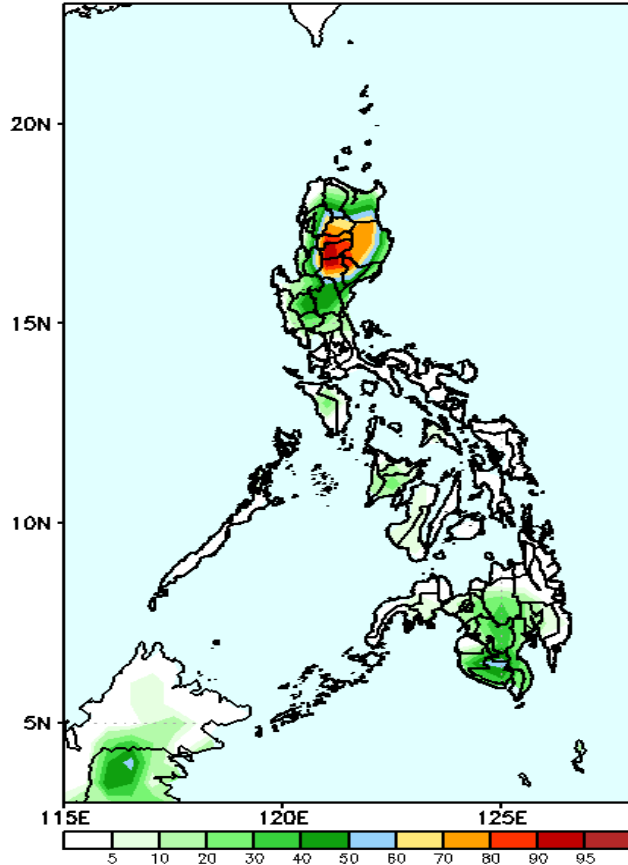
High to very high probability to exceed 50mm of rainfall over most parts of Northern and Central Luzon and Mindanao; moderate to high likelihood in Southern Luzon and Panay island while low to moderate probability over the rest of the country

Exceedance Probability > 100/150/200 mm

Week 1: May 15-21, 2023

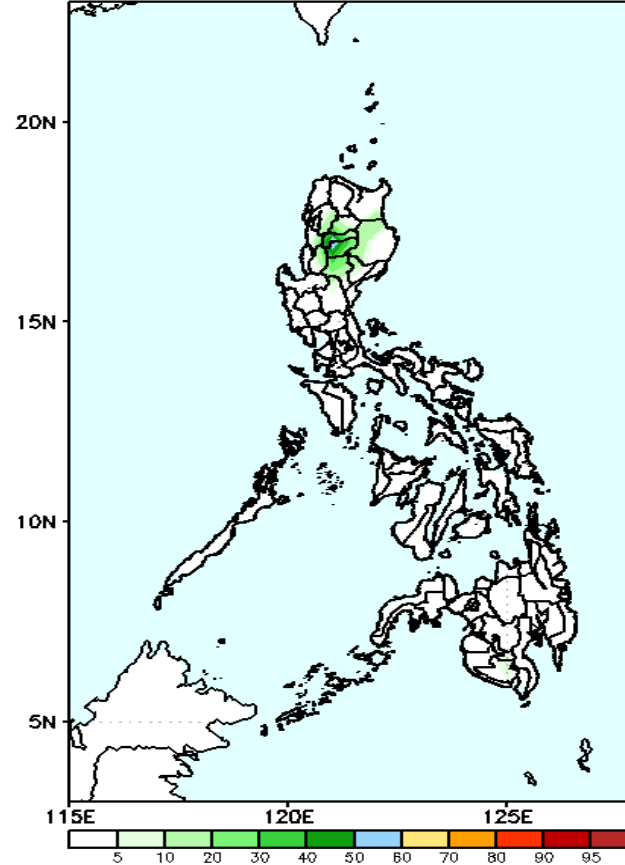
- Very high probability
- High Probability
- Moderate Probability
- Low Probability

GEFS Week-1 Exceedance Prob. > 100mm
Valid: 20230515 - 20230521



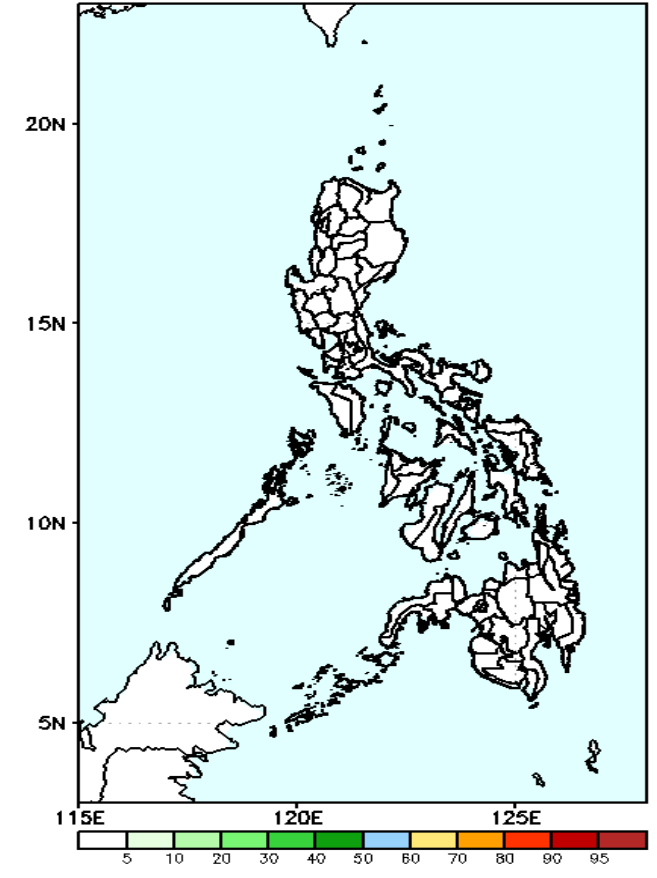
Moderate to high probability to exceed 100mm of rainfall in most parts of CAR and some parts of Cagayan Valley region while low probability over the rest of the country

GEFS Week-1 Exceedance Prob. > 150mm
Valid: 20230515 - 20230521



Low probability of rainfall to exceed 150mm in most parts of the country during the forecast period.

GEFS Week-1 Exceedance Prob. > 200mm
Valid: 20230515 - 20230521

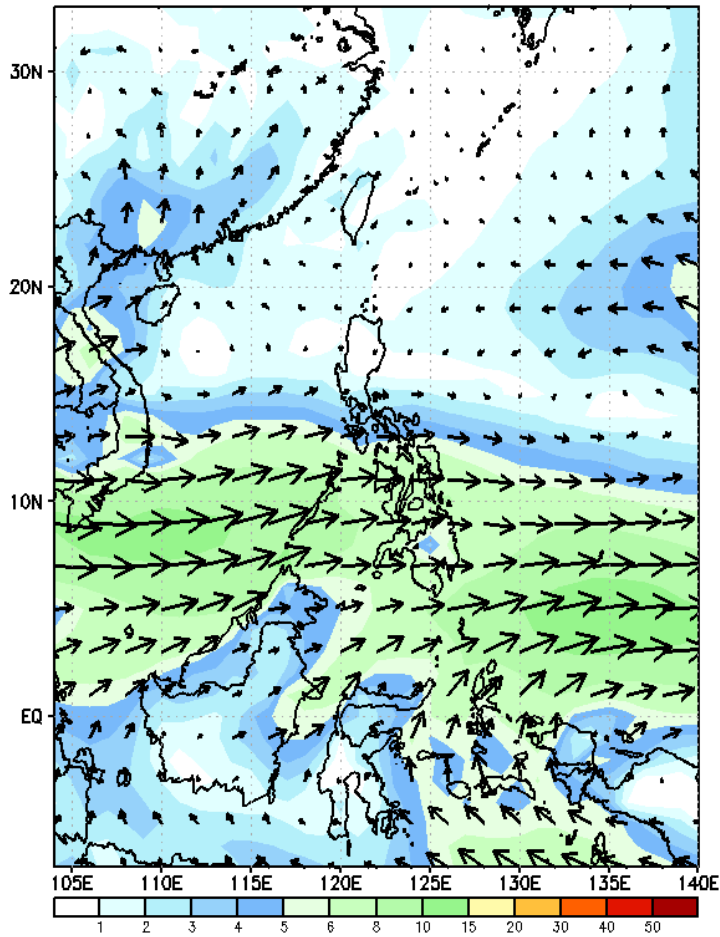


Low probability of rainfall to exceed 200mm in most parts of the country during the forecast period.

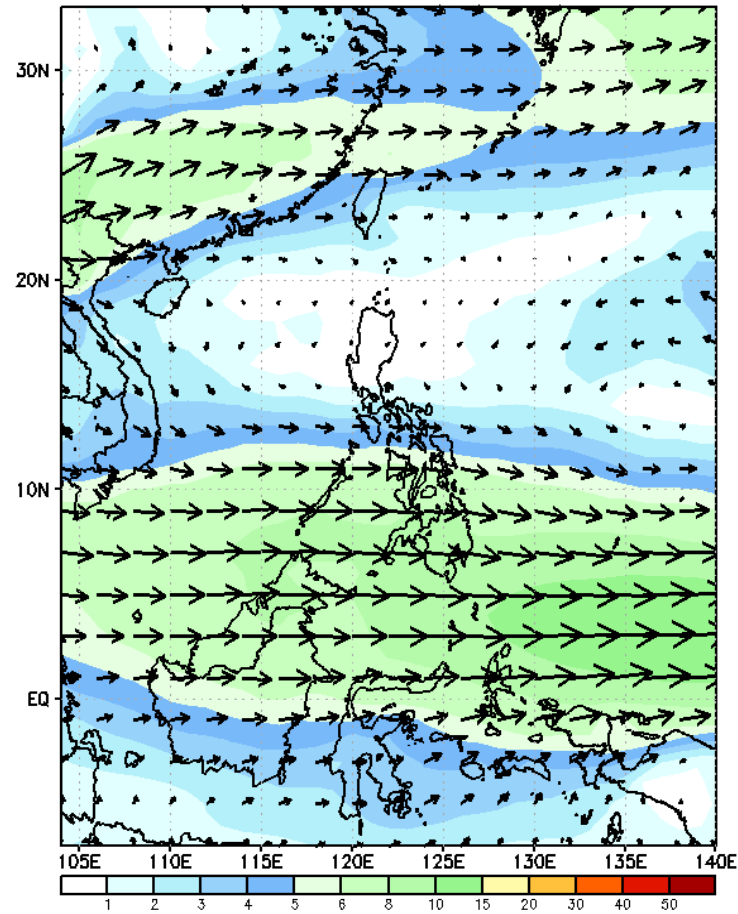
GEFS Week-2 Forecasts: Wind Forecast

Week 2: May 22-28, 2023

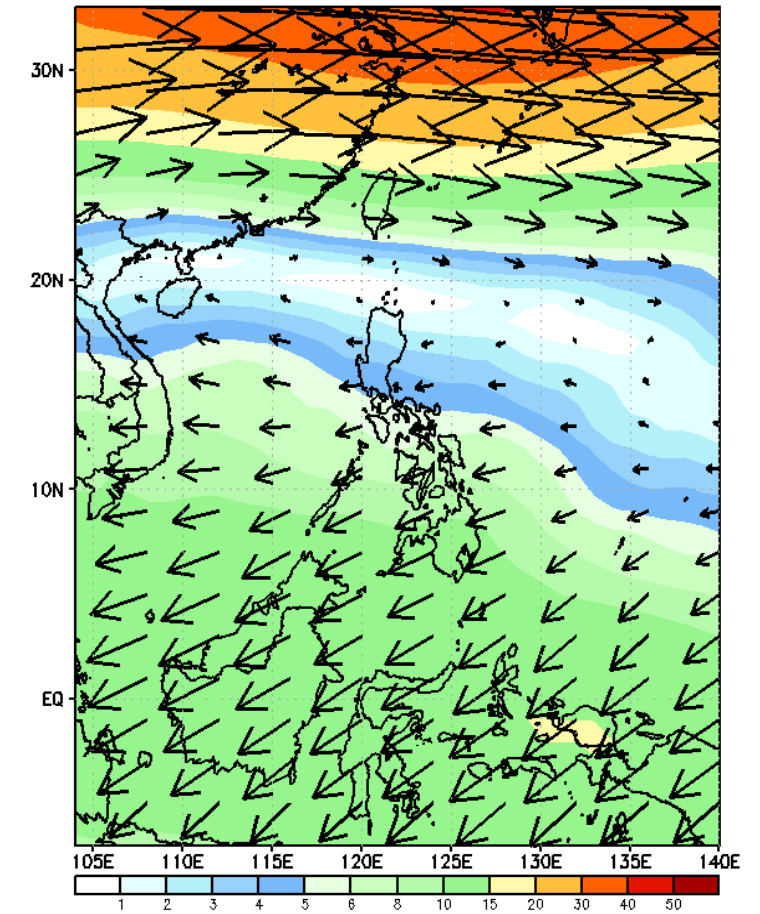
GEFS Week-2 850-hPa Wind Total
Valid: 20230522 - 20230528



GEFS Week-2 700-hPa Wind Total
Valid: 20230522 - 20230528

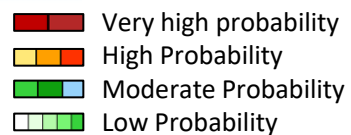


GEFS Week-2 200-hPa Wind Total
Valid: 20230522 - 20230528



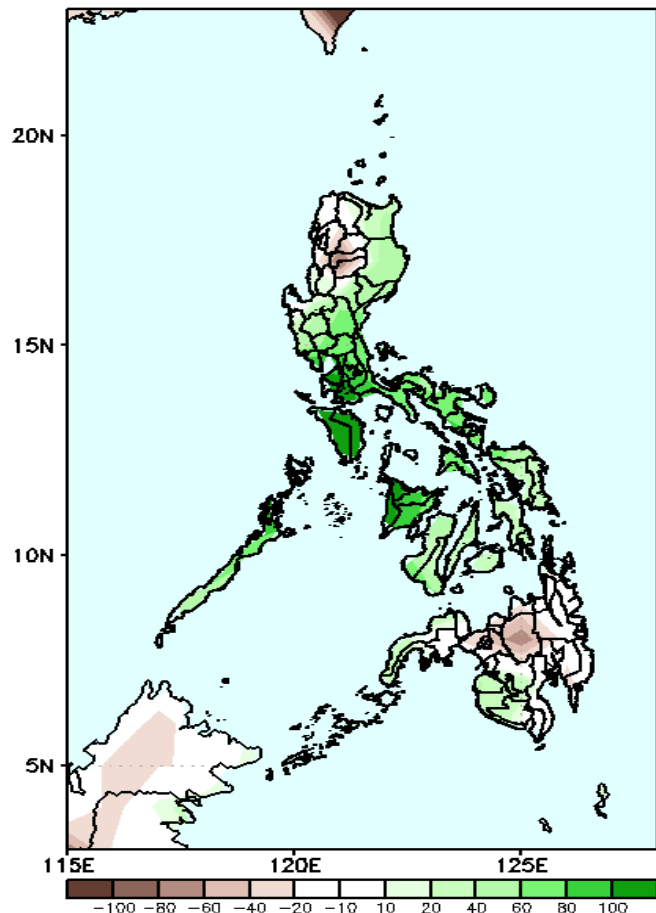
Westerly wind flow is forecasted to affect Visayas and Mindanao while the western sections of the country while Easterlies is forecasted to affect Luzon during the forecast period.

Precipitation Anomaly and Exceedance Probability > 25/50 mm



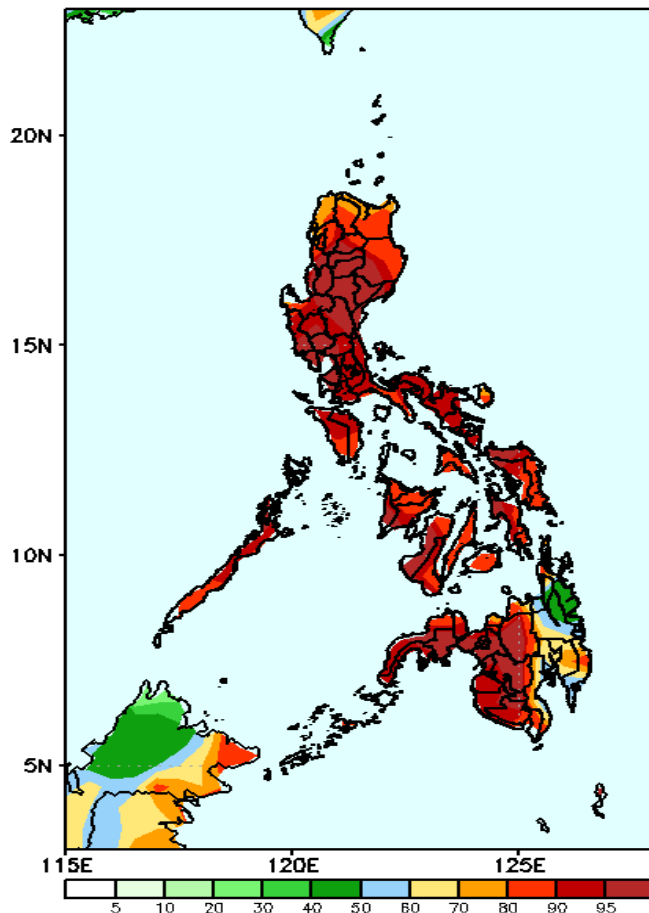
Week 2: May 22-28, 2023

GEFS Week-2 Precip Anomaly
Valid: 20230522 - 20230528



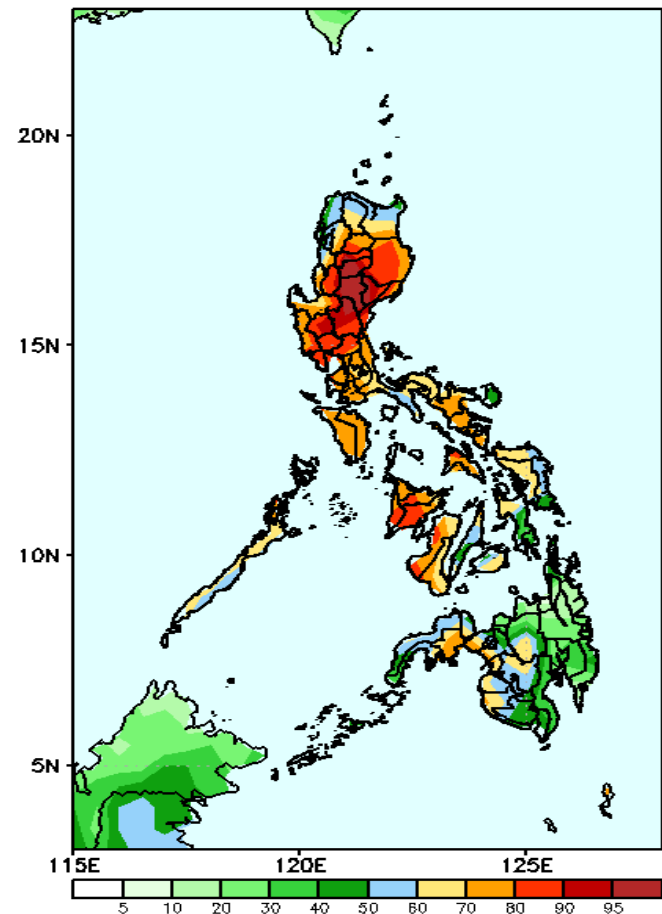
Increase of rainfall of more than 100mm is expected in most parts of southern Luzon and Panay Island; 40-80mm for the rest of Luzon, most of Visayas and western Visayas while 20-50mm rainfall deficit is more likely in Mt. Province and northern & eastern Mindanao during the forecast period.

GEFS Week-2 Exceedance Prob. > 25mm
Valid: 20230522 - 20230528



High to a very high probability to exceed 25mm of rainfall over most parts of the country during the forecast period.

GEFS Week-2 Exceedance Prob. > 50mm
Valid: 20230522 - 20230528



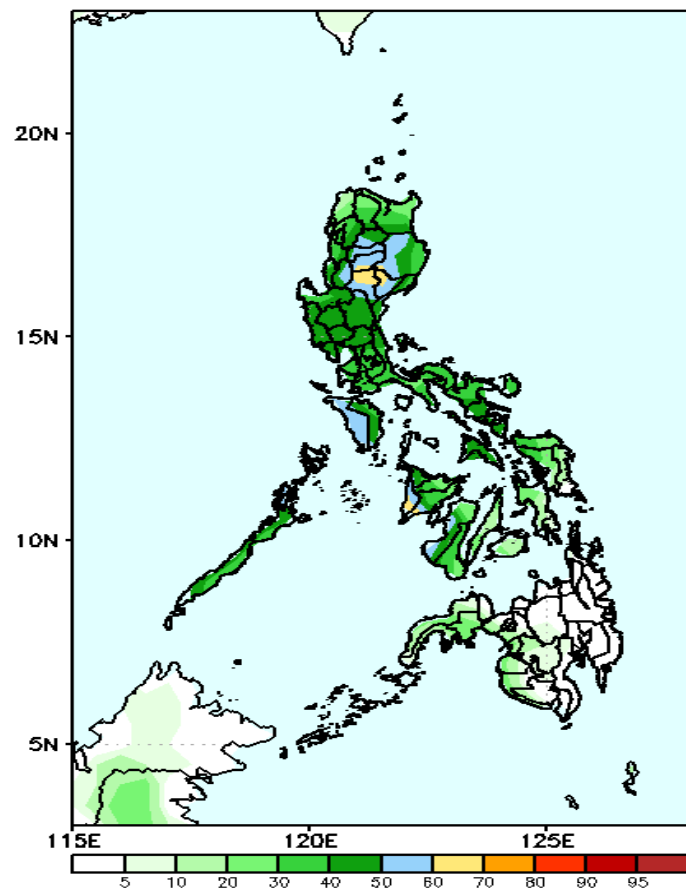
High to very high probability to exceed 50mm of rainfall over most parts of Luzon and Visayas while moderate to high probability in most parts of Mindanao.

Exceedance Probability > 100/150/200 mm

Week 2: May 22-28, 2023

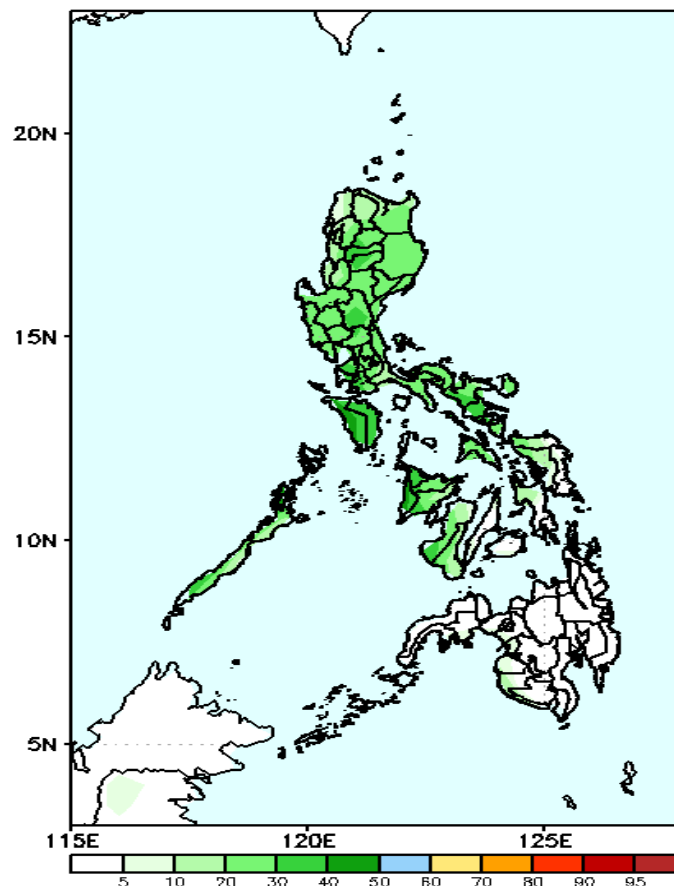
- Very high probability
- High Probability
- Moderate Probability
- Low Probability

GEFS Week-2 Exceedance Prob. > 100mm
Valid: 20230522 - 20230528



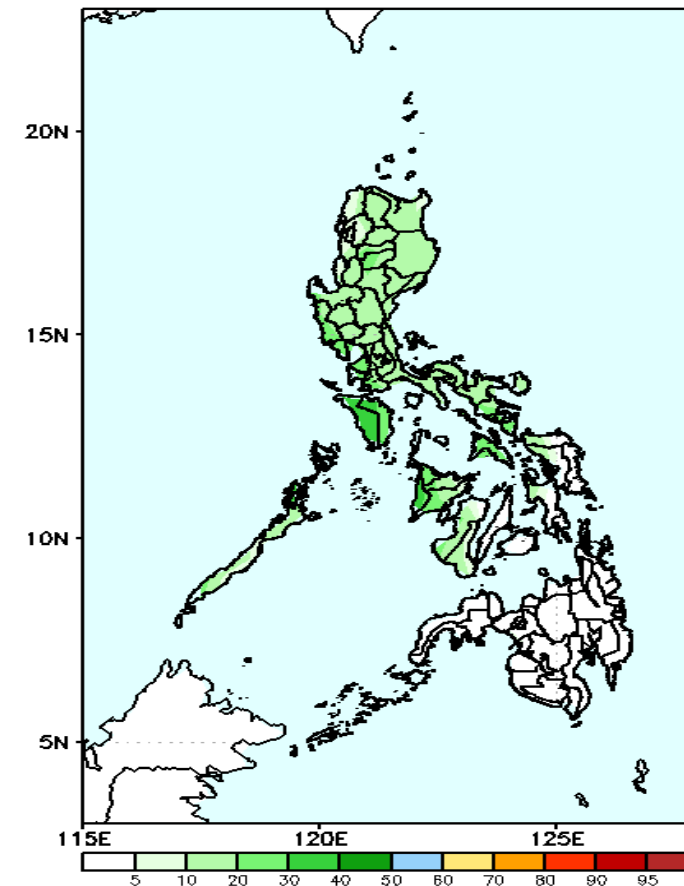
Low to moderate probability to exceed 100mm of rainfall in Nueva Vizcaya and some portions of CAR while low probability for the rest of the country.

GEFS Week-2 Exceedance Prob. > 150mm
Valid: 20230522 - 20230528



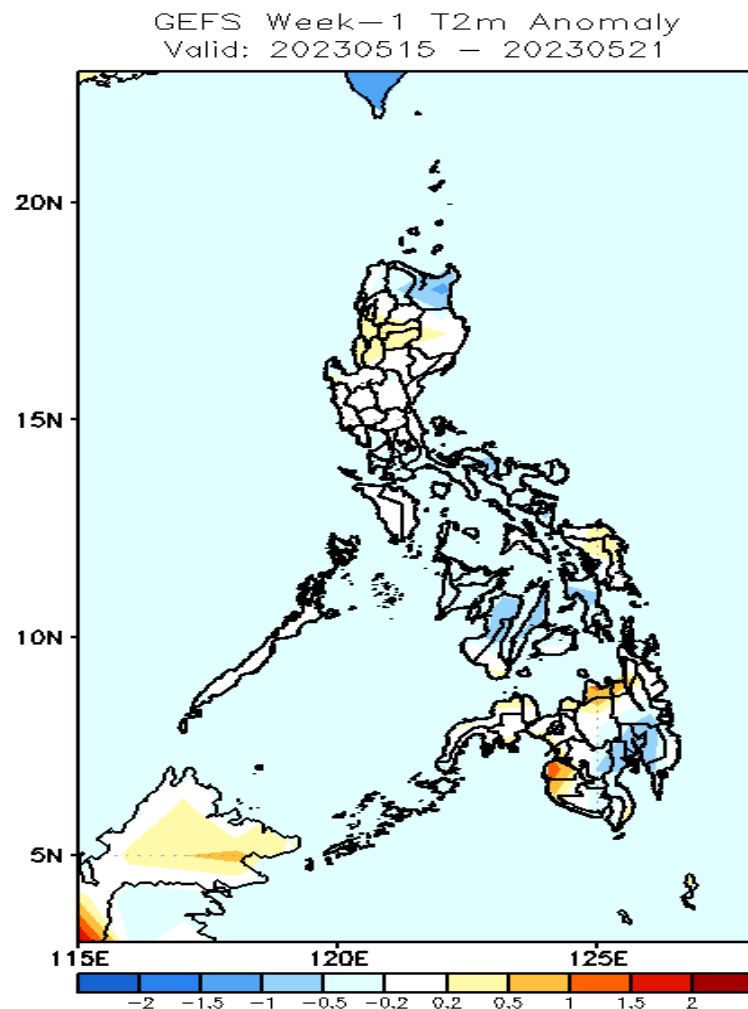
Low probability of rainfall to exceed 150mm in most parts of the country during the forecast period.

GEFS Week-2 Exceedance Prob. > 200mm
Valid: 20230522 - 20230528



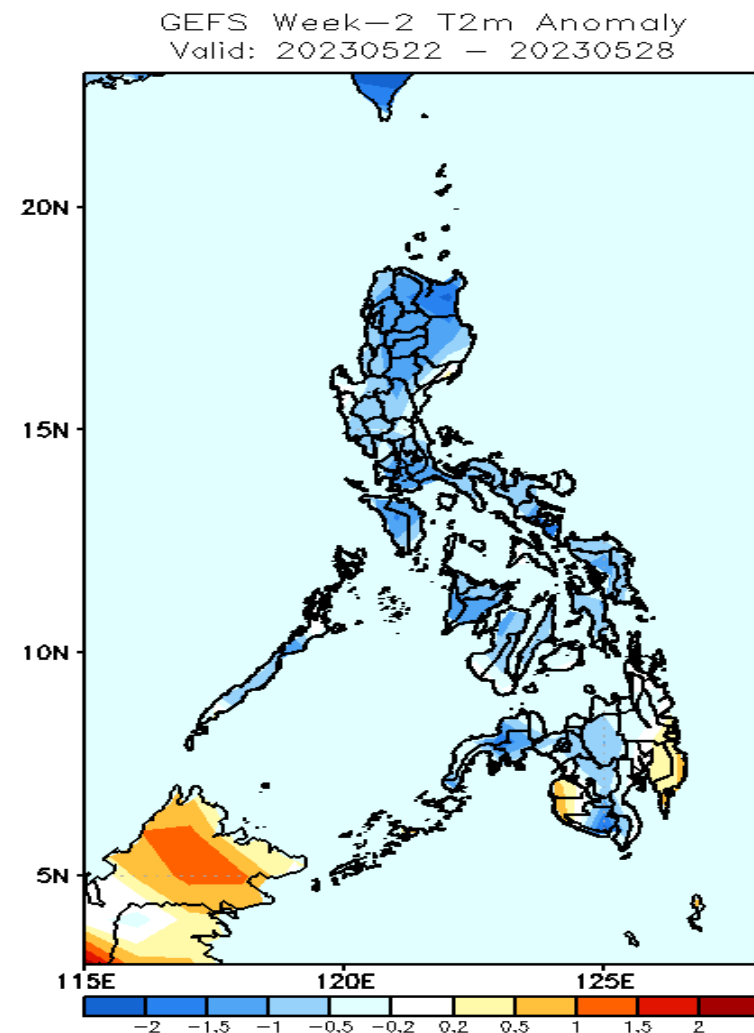
Low probability of rainfall to exceed 200mm in most parts of the country during the forecast period.

GEFS Week-1 & 2 Forecasts: T2m Anomaly



2m Temperature Week 1: May 15-21, 2023

Average to slightly cooler surface air temperature will likely experience in most parts the country except in Maguindanao and Misamis oriental where warmer than average surface air temperature will likely have during the forecast period.



2m Temperature Week 2: May 22-28, 2023

Average to cooler than average surface air temperature will likely experience in most parts of the country except in Davao Oriental and eastern part of Maguindanao and Sultan Kudarat where slightly warmer than average temperature will likely have during the forecast period.